



What results can be expected?

A significant improvement is achieved in a majority of cases. These improvements show within days to weeks, depending on the underlying condition. Frequently, positive results are obtained in cases where conventional methods failed. In some cases it is necessary to repeat treatment several times.

Which conditions call for shockwave therapy?

Shockwave therapy with VersaTron® or EquiTron™ devices is recommended for the management of a variety of musculoskeletal disorders that cause chronic pain and lameness in horses. Please discuss with your veterinarian whether the non-invasive treatment option is suitable.

Currently, horses suffering from chronic pain and lameness must undergo lengthy and cumbersome treatment regimens. These usually involve prolonged medication and surgical interventions. Often the results are not satisfactory. Shockwave therapy constitutes a new modality for dealing with refractory conditions.



How is shockwave treatment performed?

Having diagnosed the problem, the veterinarian determines whether the horse's condition is suitable for shockwave treatment. This is usually done on an outpatient basis at your veterinarian's clinic. The horse requires only a mild sedation; it remains standing throughout the procedure. Treatment usually takes 10-20 minutes. Horses reactions to the device may vary with the area treated and in some cases general anesthesia may be required to safe and adequate restraint. The details

of the subsequent resting and follow-up requirements should be discussed with the veterinarian. Usually, the horse can leave within 1-2 hours.

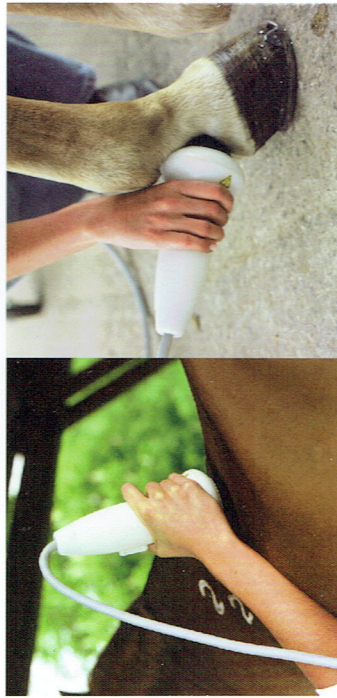
What are shockwaves?

In human medicine, shockwave treatment has been performed for over 25 years to treat a number of urologic and orthopedic conditions in a non-invasive manner. Shockwaves are high-energy sound waves, which are transmitted to the affected body part.

The Leader In Shockwave Treatment

All of SanuWave's veterinary and human shockwave devices use electro-hydraulic principles to create powerful and focused shockwaves. The unique physical properties, the large focal area, and the ability to reach deep tissue structures make VersaTron and EquiTron™ the shockwave devices of choice for leading-edge equine hospitals and universities across the USA.

All of SanuWave's orthopedic shockwave devices delivers high-energy, focused shockwaves that can reach areas several inches below the patient's skin. Extensive medical knowledge of anatomy and musculoskeletal disorders is an absolute necessity for safe and successful treatment.



Background

SanuWave's OssaTron was developed and clinically tested, becoming the first FDA approved shock wave device designed for orthopedic use in humans. The positive results in human orthopedic medicine for a number of indications preceded the development of the first device suited for veterinary medicine.



EquiTron™



VersaTron®

Precaution: A post treatment period of analgesia is known to exist following ESWT of limbs of horses. Extra care must be taken to make sure the underlying musculoskeletal disorders have improved enough to allow increased or excessive exercise. Some racing commissions have imposed regulations in regard to the required recovery period following ESWT. Please contact the appropriate regulating committees regarding your state.

Caution: Federal law restricts this device to sale by or on the order of a licensed veterinarian.

Need more information?

For more information, please contact your veterinarian or SanuWave at vetdivision@sanuwave.com.



(Practice stamp)

This informational brochure was presented to you by:



SanuWave Services, LLC

Veterinary Division
1841 West Oak Parkway, Suite A
Marietta, GA 30062

T 800-245-4417, Ext. 122

F 800-246-2895

vetdivision@sanuwave.com

www.sanuwave.com

Shockwave treatment



treatment

gets your horse
"back on track"

VEN0310 H103 EQ_EN_USA 01/06 Equipment and specifications are subject to change without notice.

